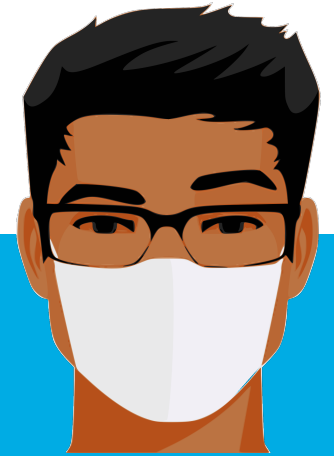




December Safety Info

- Covid Precautions
- Holiday Safety Reminders
- Defensive Driving in Cold Temps.
- PPE & Job Site Conditions
- Report Close Calls

COVID PREVENTIVE MEASURES



- All persons wear a face covering when applicable.
- Protect your breathing zone. This is why the air dryers are deactivated in lavatories.
- Avoid crowds, maintain distance around unknown persons, avoid questionable gatherings.
- Recognize risk factors; reduce exposures when possible.
- Hand sanitary practices — wash or sanitize often; avoid touching face or eyes
- At home: regularly change the air filter on your heating appliance. Use high-grade filter media.
- Stay properly hydrated. Get seasonal flu shot. Cover mouth and nose if you cough or sneeze.
- If you feel ill, do not come into work. Report the situation and quarantine until tested.

HOLIDAY SAFETY REMINDERS



- Decorating the house & yard – use proper ladder and climbing practices. Avoid improvised access. Have a helper assist.
- Electrical – avoid outlet & plug overload. Check wiring for defects or pinch points. Common source of home fire. Use GFCI outlet on outdoor electrical installations.
- Check HVAC system; wood stove or fireplace safety; proper ash disposal
- Check function on smoke and CO2 alarm. Avoid parking vehicles indoors.
- Check fire extinguisher; plan a safe escape route for upper floor occupants
- **Stress is a common issue** around Holidays. Understanding & empathy can help. Patience. Neutralize.
- **Covid reminders for gatherings**. Consider virtual alternates. Travel precautions apply. Use appropriate controls for in-person events.
- Avoid night driving when possible. Impaired drivers more common after dark.

DEFENSIVE DRIVING IN COLD TEMPS.

- When we see the 'little white lines' on the pavement, expect some type of precip. Most DOTs pre-treat in advance of inclemency.
- **SLOW DOWN** when road is wet, iced, snow. BRIDGE DECKS will ice over.
- Posted speed = dry road, daylight, passenger vehicle. Otherwise, make adjustment.
- Carry extra WEIGHT in vehicle for improved road-holding traction
- Avoid bulky garments while driving. Interior will warm up quickly. No hoodies.
- Hands-free, no distractions. Deer season precautions. Clean headlights.
- Grip fabric, light weight GLOVES can help with a cold steering wheel.
- **Clean glass & mirrors** to reduce glare; use scraper on frosted glass. Keep spare washer fluid handy, supplies may run down if the weather turns.
- Wear a high-vis. garment when walking on or near travel lanes, parking lots, etc.

PPE & JOB SITES

- Typically a large Client will specify PPE for their site.
- Otherwise, we need to adopt Best Safety Practices based on location & exposure.
- Standard complement of PPE includes: head, hand, eye, foot protection; appropriate clothing including high vis outer garment.
- Multiple types of PPE are available in each category depending on task.
- Good practice: carry two types of gloves, tinted & clear lens eye protection; muck boots & work boots, etc.
- KNOWING WHEN TO SWITCH THEM OUT is key.
- One type of PPE may not be adequate for all tasks encountered.
- If you need specialty PPE, contact the company's Safety Manager.
- Using PPE is a key safety behavior. Using the right type of PPE earns extra credit!

'CLOSE CALL' REPORTING



- Close Call reports are indicators of perceptual safety awareness.
- Failure to recognize or ignoring a Close Call is a form of risky behavior. As a rule, we are a risk-averse organization.
- Recognizing and reporting a Close Call is an indicator of well-developed cognitive ability.
- “Boots on The Ground” or behind the wheel, Close Calls are a form of reality check. They are ‘almost’ events that want to send a warning message, large or small.
- Failure to report a Close Call is a bit of denial we do not particularly need in our Safety Skills inventory.
- **Please step up & relay the ‘learnings’.** Your report can make a difference & help prevent a repeat situation, which could result in a different outcome.
- Anyone can report a Close Call via text, e-mail, phone, picture, video, etc.
- All we need to know is: **WHAT ALMOST HAPPENED**