

John Meola's
Safety First!
Safety Meeting Topics
for WSA Members



July Safety Info



- Covid 19 & Inter-Social Distances
- In Hot Weather Stay Hydrated!
- Hot Weather Defensive Driving
- Poison Ivy and Other Poisonous Plants Avoidance
- Be Sure to Report Your Close Calls

Covid Did Not Take the Summer Off



Our lessons in Industrial Hygiene continue...

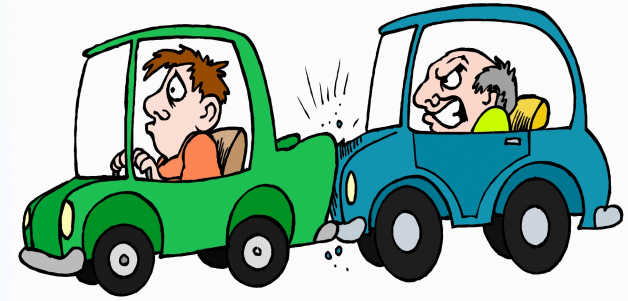
- Awareness of surroundings & space; clearance of 6-10 feet to avoid spew droplets.
- Air flow & entrainment; face covering near others; avoid congested areas
- Hand, face, skin sanitary practices; eye protection is recommended
- Shared & touch surfaces; use glove or other interface
- Sanitize personal use items, belt & buckle, footwear, keys, phone, earbuds, glasses, etc.
- Hand WASHING; avoid cross-contamination; supervise kids to the best extent possible
- Sunlight is a helpful disinfectant; rainy days not so much.
- Watch where you step and walk in parking lots.

Heat: Hot and Hotter = July & August

- Buy more watermelon, peaches, strawberries
- Drink more water, Gator-ade, squincher, lemonade, etc.
- Think electrolyte replacement!
- Eat Less heavy meals; more salad, less fat, skip the fries, have a tomato, fruit, corn, hydrating veggies
- Water cooler & ice bucket challenge – drinking liquid that is too cold is not good
- Cool to room temp is best for assimilation – otherwise our body has to work harder to absorb H₂O
- High heat can accelerate fatigue. Get adequate rest cycle; REM sleep



Hot Weather Defensive Driving



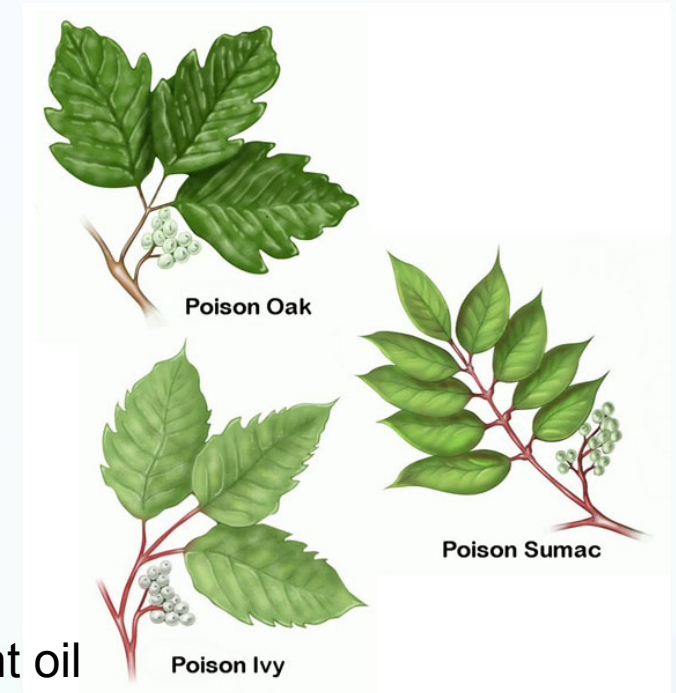
- High Heat is tough on vehicles. Tires, battery, electrical systems, hot steel and glass, etc.
- High temp on road surface - may affect tires. Check pressure and tread-wear pattern
- Avoid road rage situations; use defensive positioning
- **Make sure they see you! Wear your vest; stay visible; stay in defensive, protected positions**
- Semitrailers – if you hear a slapping noise from tires, back off. The tread is separating and indicates a failure is likely. Stay well away – the tire carcass can cause a wreck.

Most Common Poison Plants



Giant Hogweed

- Treat all vegetation as suspect.
- Wind turbulence can cause spread of contaminant across branches and limbs.
- Avoid contact as much as possible
- Practice Social Distance when available
- High sensitivity persons: PPE- Hard hat & face shield, gloves, long sleeves; barrier crème; etc.
- Avoidance is best practice. Once the irritant oil is on you, it is not easily removed.
- Avoid touching eyes, face, mouth, etc.



Close Calls and Reporting

Close Call reporting is important to our Company. This is how we avoid 'landmines'.

If you have a close call while sweeping or with any of the other services we provide, be sure to report it to your supervisor. We will then share the report for improved safety awareness.

Every time you step out of your vehicle, things can change — or sometimes while you're still in it!

- Traffic, job site, people, weather, other trades, client operations, etc.

Make a Safety Assessment during each of your projects; before you act, *think it through*.

Factors: walking & climbing surfaces; vegetation & insects; weather; PPE; tools & gear; vehicle driving, backing, parking, loading & unloading, etc.

Wear high-viz apparel routinely. You'll never know when it will save your life.